



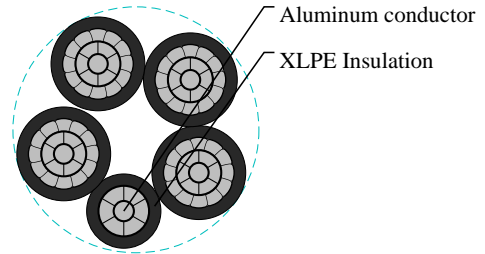
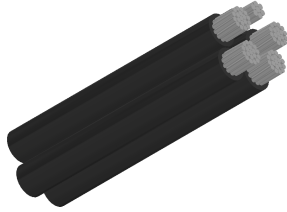
Caledonian

Aluminium Conductor Cables

www.caledonian-cables.com

marketing@caledonian-cables.com

600/1000V ABC –Aerial Bundled Cables to HD 626 S1 (AL/XLPE) 4C50+1C25



APPLICATIONS

The aerial bundled cables designed for fixed installation as overhead power lines up to 1000 V incl.

STANDARDS

HD 626 S1

CABLE CONSTRUCTION

Conductor:Aluminium conductor, round stranded compressed (RM)

Insulation:XLPE

PHYSICAL AND THERMAL PROPERTIES

Rated voltage:0.6/1 kV

Test voltage:4/50 V_{eff} kV/Hz

Laying temperature:min. -20 °C

Operating temperature:-30 bis ~ +80 °C

Conductor temperature:max. +80 °C

Short-circuit temperature:max. +130 /5 °C/s

Bending radius (min.):18 × o of cable

DIMENSION AND PARAMETERS

No. of Cores × Cross- sectional Area	Approx. Overall Diameter	Cable Weight	max. conductor resistance	min. breaking load of conductor strand	Current rating in the air
No. ×mm ²	mm	kg/km	Ω/km	kN	A
4x50+1x25 RM	31.9	814	0.641/1.2	8/4	165/107